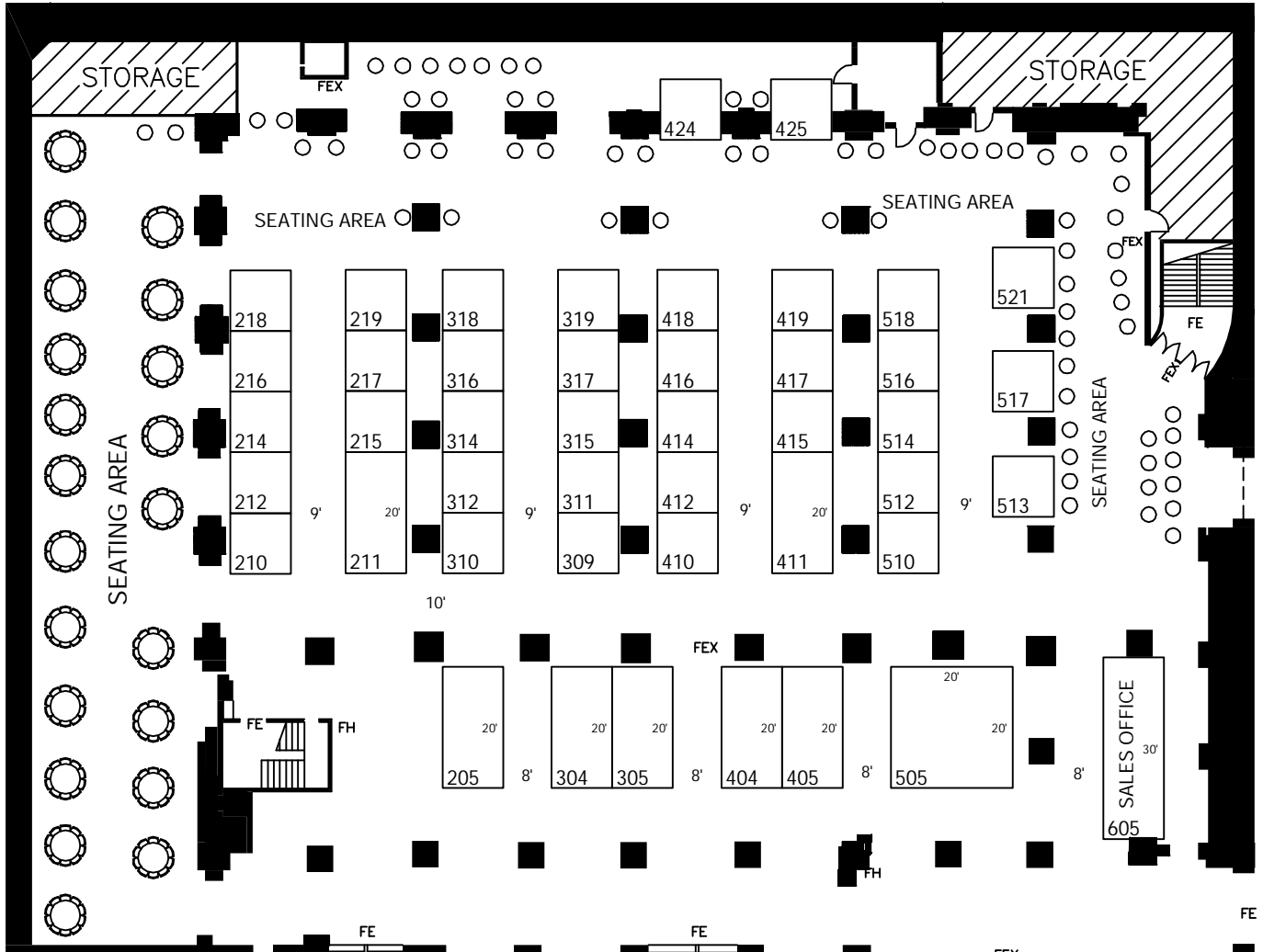


SEARCH ENGINE STRATEGIES

DECEMBER 8 - 9, 2009

Chicago Hilton & Towers • South East Exhibit Hall

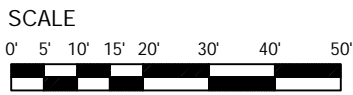


Inventory as of 10/21/2008

Dimension	Size	Qty	SqFt
10x17	100	28	3,800
10x20	200	7	1,400
10x20	300	1	300
20x20	400	1	400
Totals:		45	5,700

REVISIONS		
NUMBER	DATE	INITIAL
1	00/00/00	XXX
2	00/00/00	XXX
3	00/00/00	XXX
4	00/00/00	XXX
5	00/00/00	XXX

DISCLAIMER
 EVERY EFFORT HAS BEEN MADE TO ENSURE THE ACCURACY OF ALL INFORMATION CONTAINED ON THIS FLOORPLAN. HOWEVER, NO WARRANTIES, EITHER EXPRESSED OR IMPLIED, ARE MADE WITH RESPECT TO THE ACCURACY, THE LOCATION, OR THE PHYSICAL CHARACTERISTICS OF THE ARCHITECTURAL COMPONENTS OF THE FACILITY OR THE EXHIBIT. IT IS THE SOLE RESPONSIBILITY OF THE EXHIBITOR TO PHYSICALLY INSPECT THE FACILITY TO VERIFY ALL DIMENSIONS AND LOCATIONS.
 © COPYRIGHT 2008, FREEMAN AND PARTNERS, ALL RIGHTS RESERVED.



FREEMAN
 NEW YORK
 DRAFTING & DESIGN

File Name:	SES CHICAGO09
Show Name:	SEARCH ENGINE STRATEGIES
Show Dates:	December 8 - 9, 2009
Facility:	Chicago Hilton & Towers
Job Number:	XXX
Acct. Exec:	C. G.